



**LIVERPOOL
PERFORMING ARTS
ENSEMBLE INC.**
THE TENTH ANNIVERSARY

PO Box 4698
Casula Mall, NSW 2170
liverpoolperformingartsensemble.org
ABN: 67 556 094 388

**CREATIVE TEAM SUBMISSION FORM
FOR THE 30TH ANNIVERSARY OF
HATING ALISON ASHLEY - THE PLAY
OCTOBER 2018**

NAME/S: _____

CONTACT DETAILS OF PROPOSED CREATIVE TEAM: _____

PRODUCTION DETAILS: Robin Klein's Hating Alison Ashley - the play by Richard Tulloch

We're looking at creating a dynamic, amusing and entertaining interpretation of this play adaption of Robin Klein's classic 'Hating Alison Ashley'. This production will use adult actors with the ability to play a Year 6 age range in a melodramatic manner to engage school and adult audiences. Some roles will be doubled.

Wednesday 24th to Saturday 27th October 2018

Auditions at Casula Powerhouse. Dates and times:TBC with Creative Team

Bump-In: Monday 22nd October

Bump-Out: Sunday 28th October

- School Performances – Matinee – 11.00am (Wednesday/Thursday/Friday)
- Public Performances – Evenings – 7.30pm (Wednesday/Friday/Saturday)
- Public Performances – Matinee – 2.00pm (Saturday)

*** Please note; all dates/times are awaiting final confirmation by our venue, the Casula Powerhouse Arts Centre. This information will be available as soon as possible. ***

Remuneration: \$300 Award Payment (Director Fee)

Rehearsals: Tuesday & Thursday Evenings – 7.30pm to 10.30pm

* *Weekend rehearsals can be negotiated between the creative team, cast and committee.*

EXPERIENCE & QUALIFICATIONS: _____



LIVERPOOL
PERFORMING ARTS
ENSEMBLE INC.

PO Box 4698
Casula Mall, NSW 2170
liverpoolperformingartsensemble.org
ABN: 67 556 094 388

CREATIVE VISION FOR THE PRODUCTION: _____

SET DESIGN/REQUIREMENTS: The CPAC Performance Space is an open area adaptable for on the floor or stage performances with flexible seating. See the not-to-scale floor plan.

COSTUME DESIGN/REQUIREMENTS: _____

LIGHTING & SOUND DESIGN/REQUIREMENTS: _____

BUDGET INDICATIONS: _____



LIVERPOOL
PERFORMING ARTS
ENSEMBLE INC.

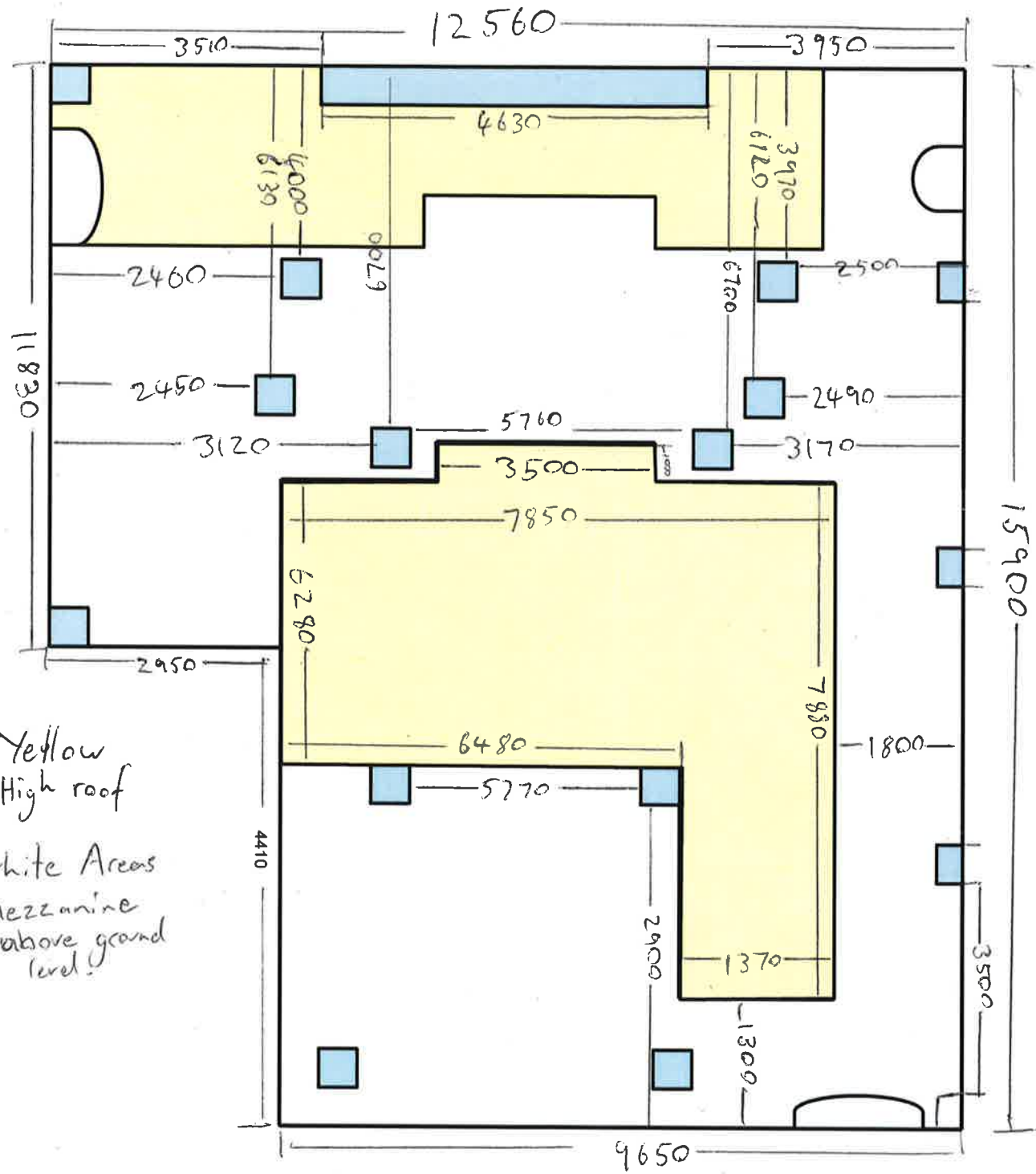
PO Box 4698
Casula Mall, NSW 2170
liverpoolperformingartsensemble.org
ABN: 67 556 094 388

ANY OTHER COMMENTS: _____

THE STORY: Erica Yrken knew she was destined for a glittering career on the stage. Never in any doubt about her own genius, she felt superior to everyone at notorious Baringa East...

That is until Alson Ashley turned up. Alison was not only beautiful, rich and clever, she was as well behaved as a nativity angel.

Yet Erica wasn't going to give in easily and the annual school camp would be an ideal place to show up Alison Ashley.



Yellow
= High roof

White Areas
= Mezzanine
above ground
level!